

DUOLED

LED Liner Light (2835)

(Constant-voltage : AC200-240V)

CE



ROHS



Features

- ★ High brightness SMD LED,NO Infrared,UV,Mercury pollution.
- ★ 60% Energy saving, compared with conventional fluorescent tube,
- ★ 50000H lifespan, Aluminum with PC construction no potential risk of broken for transportation.
- ★ Solid light source,no potential risk to fade the color for lighting.
- ★ Optical PC diffuser with milk for option,lighting comfortable.
- ★ Warm/pure/cool white all avialble with high CRI
- ★ Quick response,no flicker and dazzle

Photo



LED Liner Light SPECIFICATIONS

Size

600mm	1200mm	1500mm
-------	--------	--------

Power

18W	36W	48W
-----	-----	-----

LED Type

SMD 2835 96pcs	SMD 2835 180pcs	SMD 2835 240pcs
----------------	-----------------	-----------------

brightness

1980LM	3960LM	5280LM
--------	--------	--------

N.W.

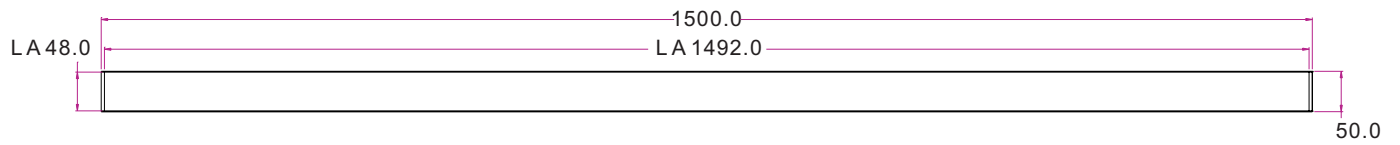
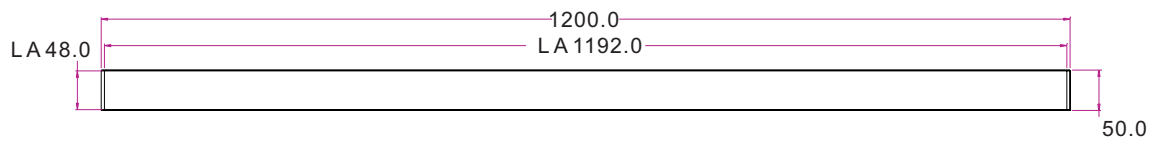
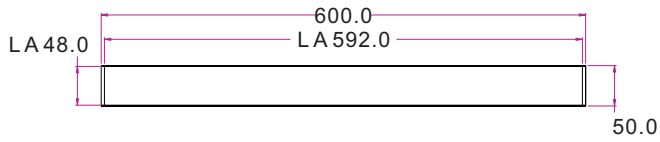
1.2KG	2.0KG	2.5KG
-------	-------	-------

G.W.

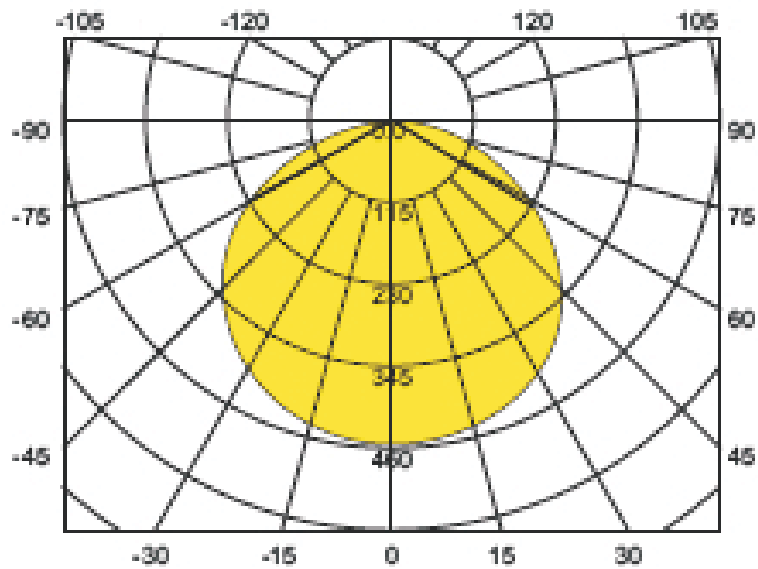
1.4KG	2.4KG	3.0KG
-------	-------	-------

Input Voltage	AC 200-240V	Color	warm white Natural white Pure white
Base Type			
Rendering Index	>80	View Angle	110°
LED'S Operating Life	50000 Hours	Material	Aluminium+PC
Operating Temperature	-20°C – +45°C	Storage Temperature	-30°C +65°C
Certificates	CE TUV ROHS	Color Temperature	2800-3200K 4000-4500K 5000-5500K 5500-6000K

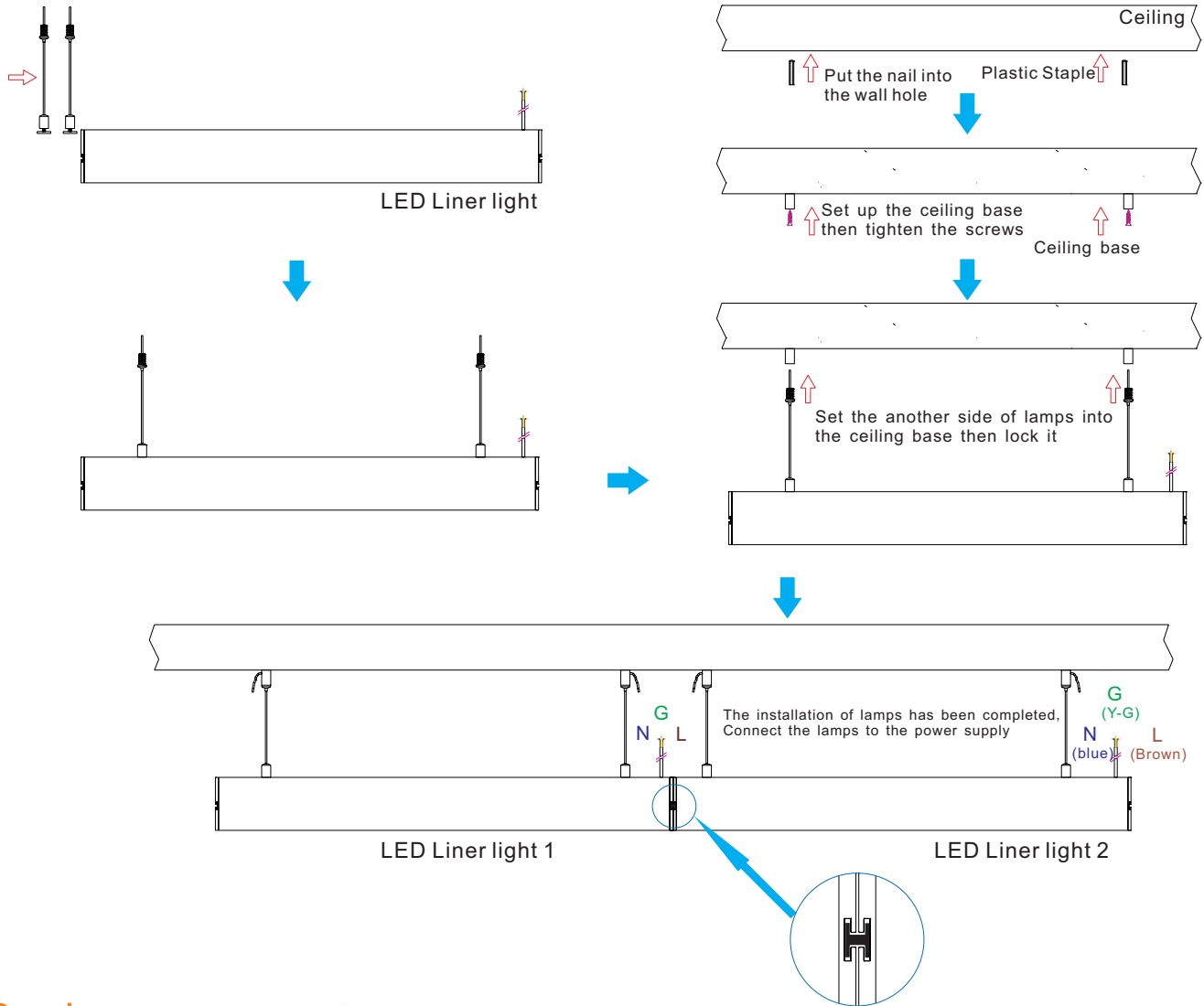
Dimensions (Unit: mm +/-3.0)



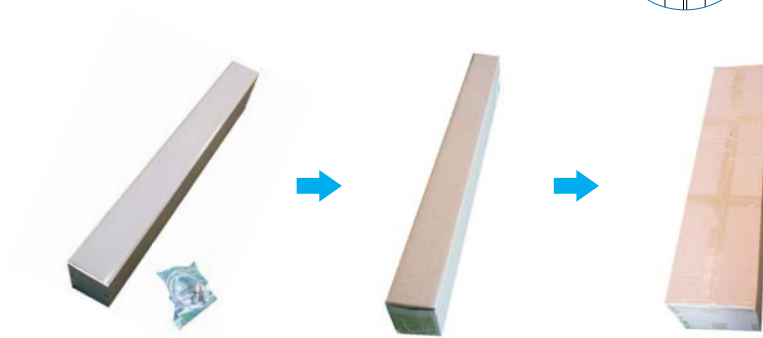
Light distribution curve



LED Liner Light installation



Package



Product	Root/Box	Product	Root/Box
600mm	20root/Box	1200mm	10root/Box
		1500mm	10root/Box

Notice

Installation information:

Power must be cut off before installation, fix it on the position of installation holes, connection of the power supply must be sealed.

1. Please read the specification first, to make sure the service environment matches the condition in the specification before using.
2. Please confirm the applicable power supply before using.
3. Make sure the switch of product is off before connect to the power supply to prevent electric shock.
4. Operation against rules may damage your property even harm to your personal safety.
5. Preliminarily estimate required quantity of LED lights, then according to the power rating of single flood light to figure out the total power and design power supply plan.
6. Dangerous high voltage, Non-professionals are not allowed to maintain the products.

If the exterior flexible cable or wire is damaged, it must exchange by the supplier, its agent or other similar qualified personnels to avoid dangers.