



Specification For LED Panel light

PRODUCT NAME: Φ225*22mm Panel light

PART NO: 223015-223016-223017

Made By	Checked by
OK	OK

CE



ROHS



Features

- Color: cool white, warm white, other available.
- Color temperature: Pure white:5500-6500K,
nature white:4000-4750K , warm white: 2800-3200K
- Enclosure material: Die-casting
- Power factor>0.95
- Beam angle: 110 Degree
- Saving energy: 50%
- Long lifes pan: 50,000Hrs
- IP code: IP41
- Gross weight: 580 g
- Working volt age: 100-240Vac/50-60Hz
- LED Source: 2835 SMD LED
- Reflector: milk color PMMA
- No UV,no IR
- Standard warranty : 3years
- Safety standard: RoHS, CE pending

Applications

LED panel light can be widely used in the hotel, restaurant, supermarket, school, office, factory, fields or open spaces and the other architecture.



Electrical/Optical Characteristics

NUMBER	ITEM	DESCRIPTION
01	Input Voltage	AC100-240V
02	Operating Voltage	DC48V
03	Power Consumption	18W
04	Power Factor	0.90-0.95
05	LED Type	SMD 2835
06	LED Q'ty	90PCS*0.2W
07	Luminous Flux	1500LM
09	CCT	2800-3200K/4000-4750K/5500-6500K
10	Beam Angle	120°
11	CRI	≧ 80 Ra
12	Life Time	≧ 50000H
13	Certifications	CE,ROHS
14	IP Code	IP41
15	luminaires Class	Class III
16	Fixing Ways	In-built
17	Operating Temperature	-20℃to+50℃
18	Storage Temperature	-30℃to+60℃
19	Humidity Operating	10-80%RH
20	Humidity Storage	10-90%RH

Product Spec

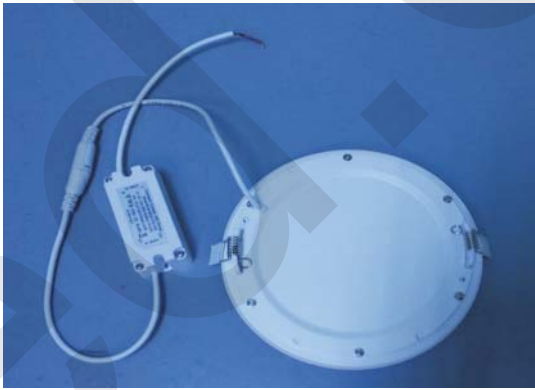
(Standard Dimensions)

Product Dimension	N.W.	Packing Dimension	G.W.
Φ225*22 mm	0.58 kg	L280*W280*H55 mm	0.80 kg

Photo

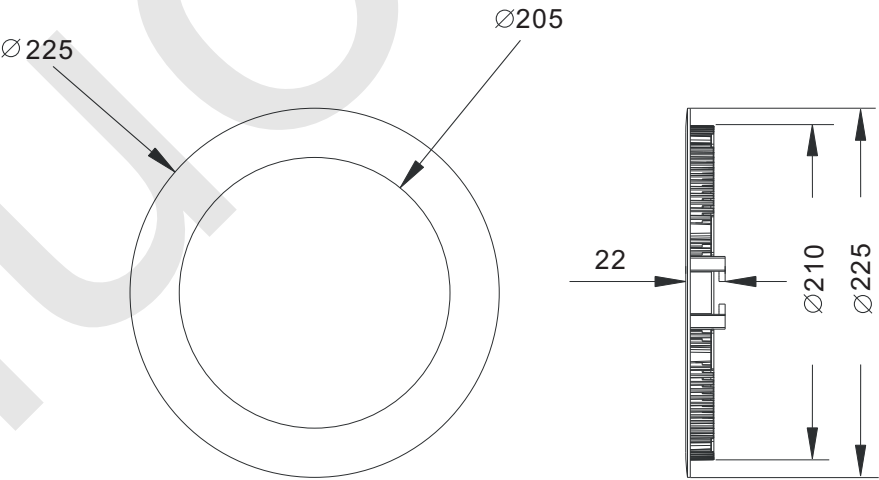


Front



Back

Dimension(Unit:mm)

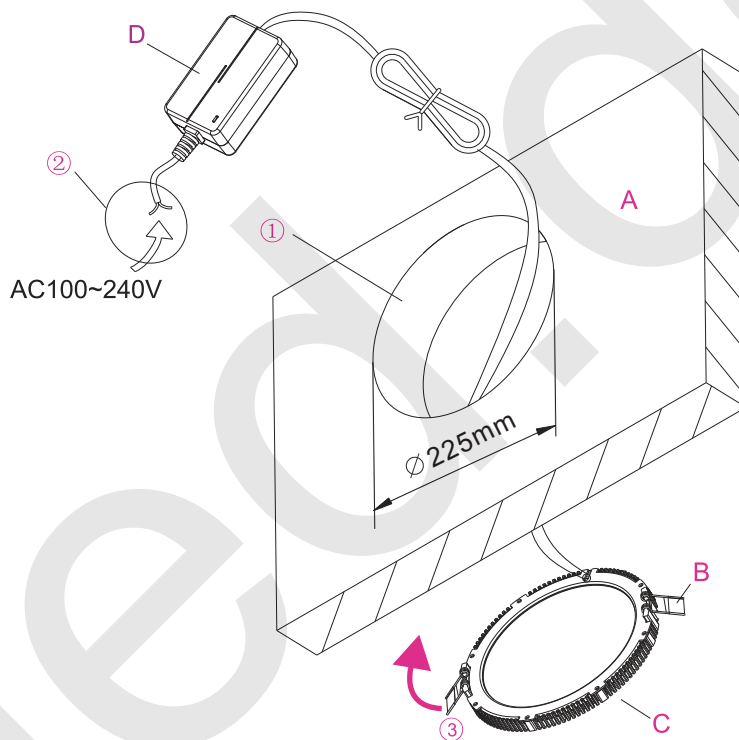


- Notes:
- 1.All dimension units are millimeters
 - 2.All dimension tolerance is 0.5mm unless otherwise noted

Installation Instruction

①	make a hole
②	connect the power wire
③	push spring
④	put the lamp into the hole

A	Wall
B	Spring
C	LED lamp
D	Driver



Packing Info



Inner Boxes package:

Quantity: 1 pcs/ box

NW: 0.58kg

GW :0.80kg

Dimension: L280 X W280 X H55 mm

Package material: W9W corrugated paper

Outer carton package:

Quantity: 22 * 1 layer = 22 pcs/carton

NW: 12.8kg

GW: 19.0kg

Dimension: L580 X W570 X H310mm

Package material: K = K corrugated paper