

LAZER

H I G H P E R F O R M A N C E L I G H T I N G



ROOF MOUNTING KIT FOR VEHICLES WITH ROOF RAILS

FITTING INSTRUCTIONS

ANLEITUNG

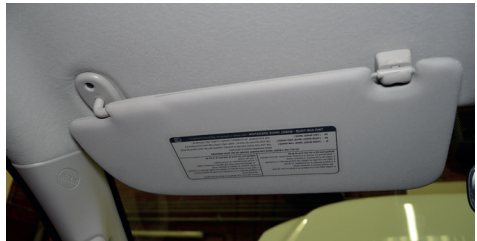
INSTRUCTIONS

INSTRUCCIONES

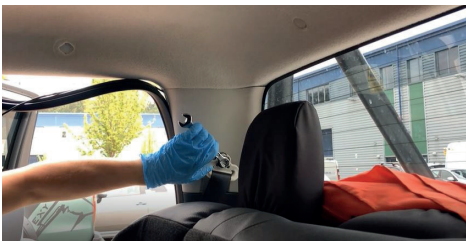
STEP 1: HEADLINING REMOVAL

When it is required to remove the roof rail bars, then full drop of the interior headlining will be required. For instructional purposes, we have shown the full removal of the headlining, but it is possible on some vehicles to complete the install by just lowering the front of the headlining.

1. Remove the following interior trims;
Interior lights, A pillar trims, grab handles, sun visors and retaining clips.



2. Remove the 'B' and 'C' pillar trims (the top of the seatbelt will need to be removed for this).



STEP 2: FITTING THE BRACKETS

1. Measure and mark the preferred distance from the front of the roof rails, for the position of the lamp/brackets.



2. Remove the roof rails and/or covers, for vehicle's with no roof rail covers then it will be required to remove the entire roof rail (see Headliner removal instructions).



3. Having ensured sufficient structural integrity in the roof rail, mark and drill 5mm rivet holes (through roof rail and/or cover plus any support material behind - support material is not supplied in this kit).



4. Considering preferred cable route into roof rail, mark and drill a 9mm cable entry hole (on the left-hand roof rail). Identify and remove material which might otherwise restrict cable entry, or routing through into vehicle headlining. File any sharp edges.



5. Having removed the relevant connector from either the lamp or wiring harness (to facilitate routing through the roof rail/roof), feed the cable grommet(s) through the cable wire.



6. The connection to the wiring harness can be made within the roof rail (space permitting), or within the roof lining. Drill a 9mm hole in through the roof rail and vehicle roof for the cable routing into the vehicle's headlining. CAUTION – Take care to avoid interference with any air-bag systems on the vehicle.

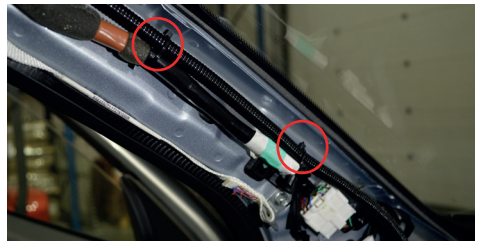


7. Having prepared the surface areas with the supplied VHB cleaner pad, apply sealant to ensure a sealed cable entry both into the roof rail, and into the headlining.

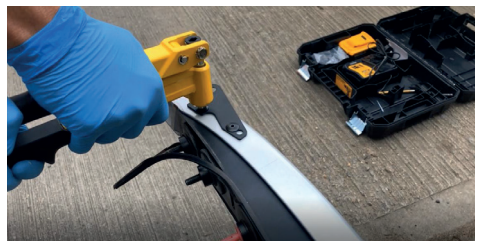
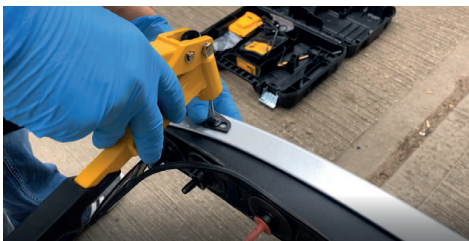


8. Using the supplied heat-shrink butt splice, connect the lamp cable and wiring harness.

9. Route the cable down the left pillar and down into the footwell while avoiding the airbag, secure with cable ties.



10. Secure the lamp brackets to the roof rails using the supplied rivets.



11. Utilise the supplied carbon spacers and security bolts (varying lengths supplied) to secure the lamp to the roof brackets.



STEP 3: WIRING WITH SPLICE - E-MARKED LAMPS ONLY

1. Install the relay and connect the live and earth to the battery, the high beam trigger is taken from the back of the headlight.



For vehicles that do not produce a constant 12v signal from the back of the headlight will require a CanM8 High Beam interface to control the signals. Please see our youtube channel, or scan the QR code for more information regarding install of the CanM8 interface.



2. Route the lamp wiring through the factory grommet, make sure a drip loop is made with the cable to prevent water ingress. The cable will fall into the left footwell.

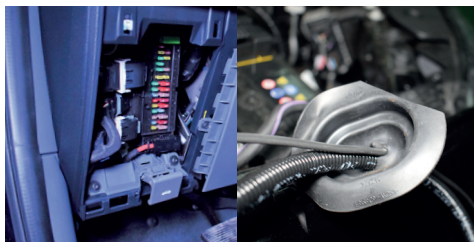


STEP 3: WIRING WITH SWITCH - NON E-MARKED LAMPS

1. Install the relay and connect the live and earth to the battery.



2. Route Switch and light bar cable through the grommet and reinstall grommet.
3. Find a suitable location for switch mounting, then drill 20mm hole. Connect crimp terminals to switch.



STEP 4: TEST LIGHT BAR IS WORKING CORRECTLY BEFORE YOU RE-ASSEMBLE VEHICLE