



## Specification For LED Panel light

**PRODUCT NAME:** 120x120\*22mm Panel light

**PART NO:** 223000-223001-223002

Made By	Checked by
OK	OK

CE



ROHS





## Features

- Color: cool white, warm white, other available.
- Color temperature: Pure white:5500-6500K,  
nature white:4000-4750K , warm white: 2800-3200K
- Enclosure material: Die-casting
- Power factor>0.95
- Beam angle: 120 Degree
- Saving energy: 50%
- Long lifes pan: 50, 000Hrs
- IP code: IP41
- Gross weight: 320 g
- Working volt age: 100-240Vac/50-60Hz
- LED Source: 2835 SMD LED
- Reflector: milkc olor PMMA
- No UV,no IR
- Standard w arranty : 3 years
- Safety st andard: RoHS, CE pending

## Applications

LED panel light can be widely used in the hotel, restaurant, supermarket, school, office, factory, fields or open spaces and the other architecture.





## Electrical/Optical Characteristics

NUMBER	ITEM	DESCRIPTION
01	Input Voltage	AC100-240V
02	Operating Voltage	DC18V
03	Power Consumption	6W
04	Power Factor	0.90-0.95
05	LED Type	SMD 2835
06	LED Q'ty	30PCS*0.2W
07	Luminous Flux	570LM
09	CCT	2800-3200K/4000-4750K/5500-6500K
10	Beam Angle	120°
11	CRI	≧ 80 Ra
12	Life Time	≧ 49999H
13	Certifications	CE,ROHS
14	IP Code	IP41
15	luminaires Class	Class III
16	Fixing Ways	In-built
17	Operating Temperature	-20℃to+50℃
18	Storage Temperature	-30℃to+60℃
19	Humidity Operating	10-80%RH
20	Humidity Storage	10-90%RH



Product Spec

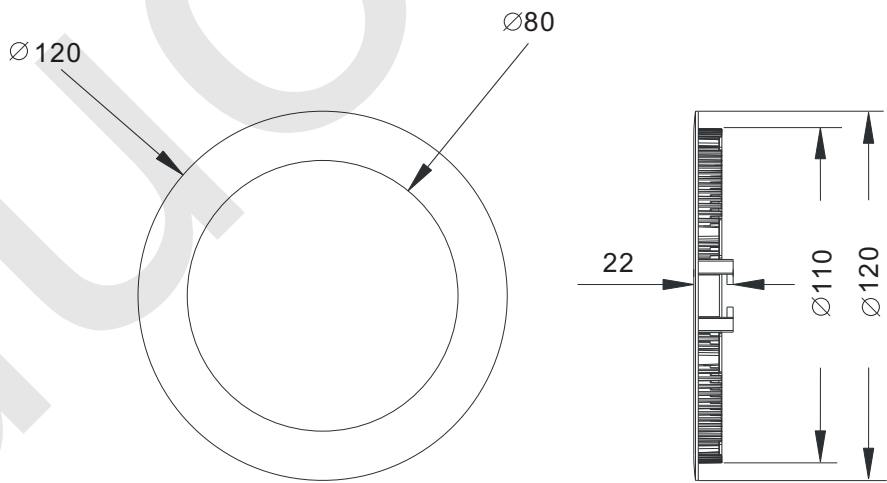
(Standard Dimensions)

Product Dimension	N.W.	Packing Dimension	G.W.
120x120*22 mm	0.28 kg	L130*W130*H45 mm	0.32 kg

Photo



Dimension(Unit:mm)



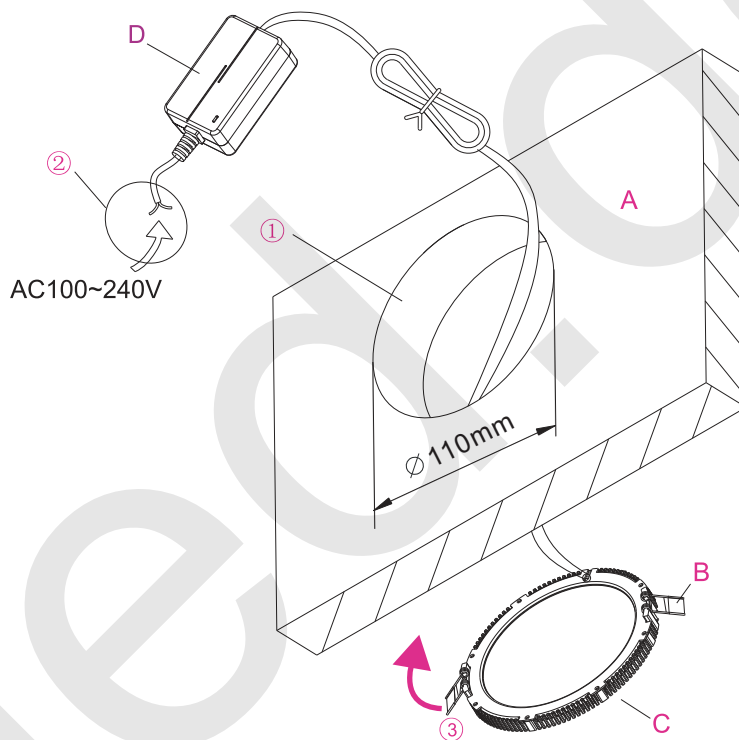
- Notes:
- 1.All dimension units are millimeters
  - 2.All dimension tolerance is 0.5mm unless otherwise noted



## Installation Instruction

①	make a hole
②	connect the power wire
③	push spring
④	put the lamp into the hole

A	Wall
B	Spring
C	LED lamp
D	Driver





## Packing Info



### Inner Boxes package:

Quantity: 1 pcs/ box

NW: 0.28kg

GW :0.32kg

Dimension: L130 X W130 X H45 mm

Package material: W9W corrugated paper

### Outer carton package:

Quantity: 10\* 1 layer = 10 pcs/carton

NW: 2.8kg

GW: 4.2kg

Dimension: L470 X W145 X H145mm

Package material: K = K corrugated paper