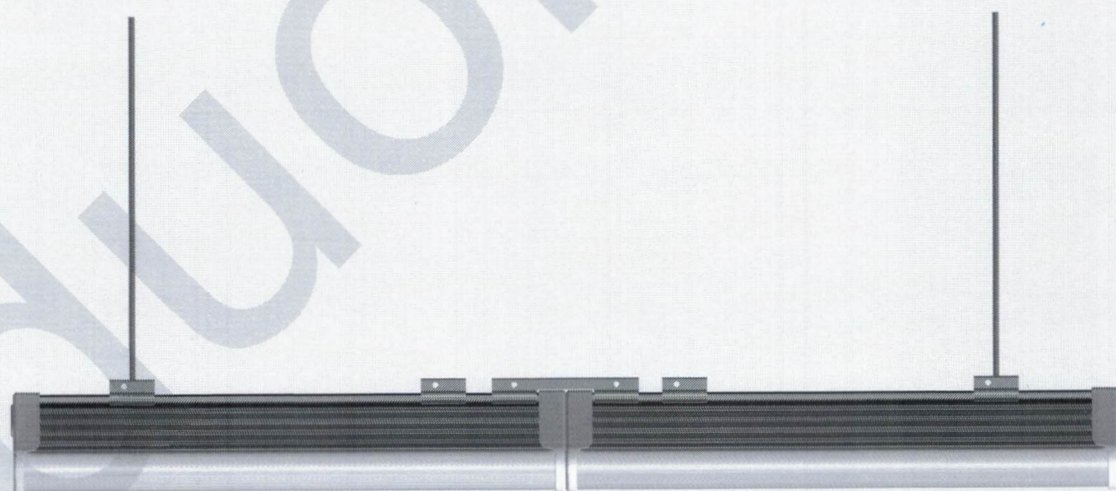


DUOLED

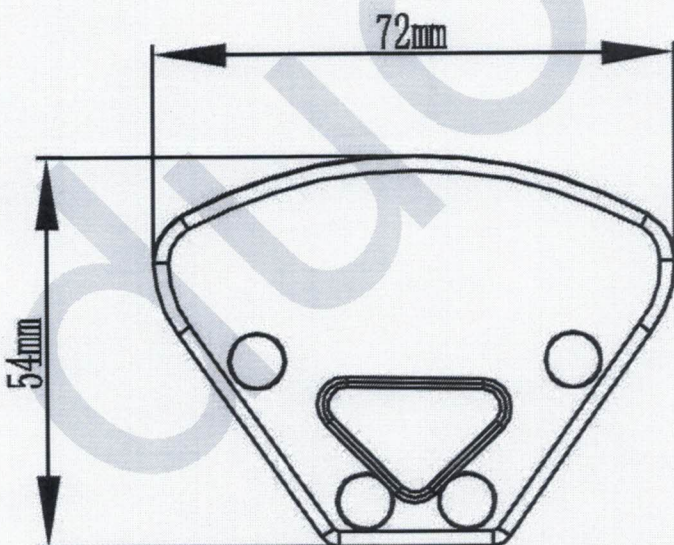
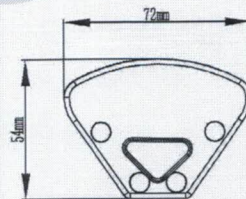
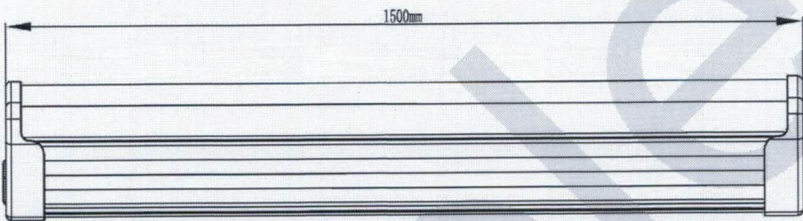
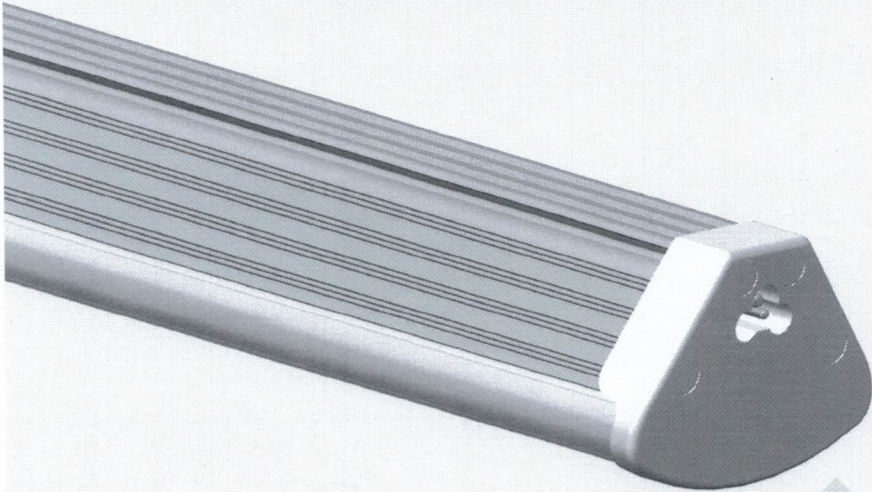
Led linear light

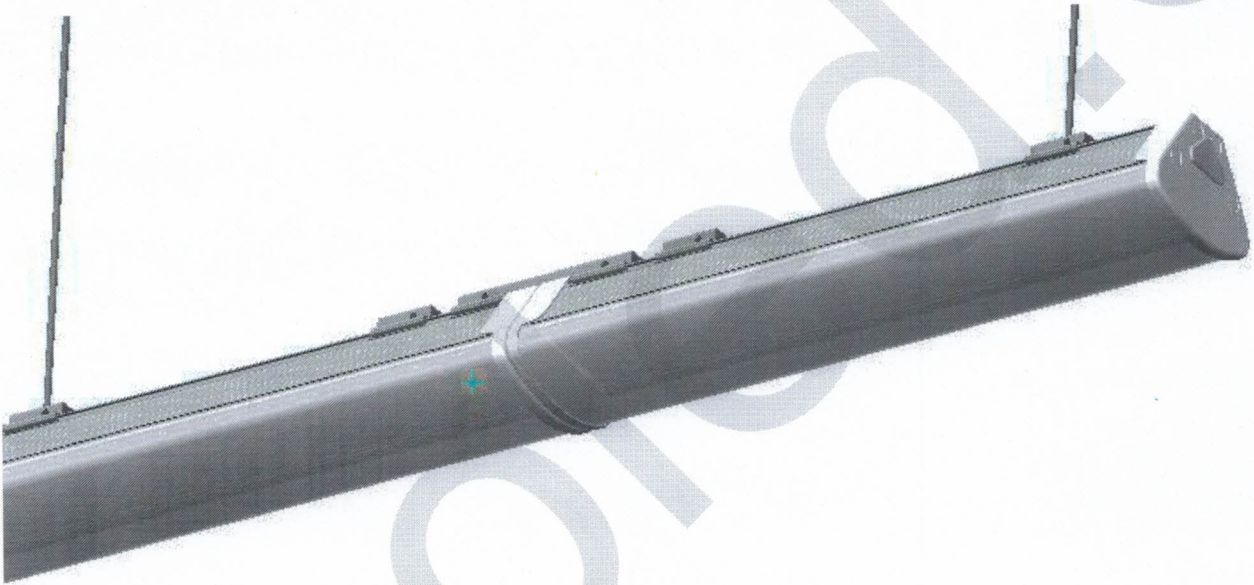
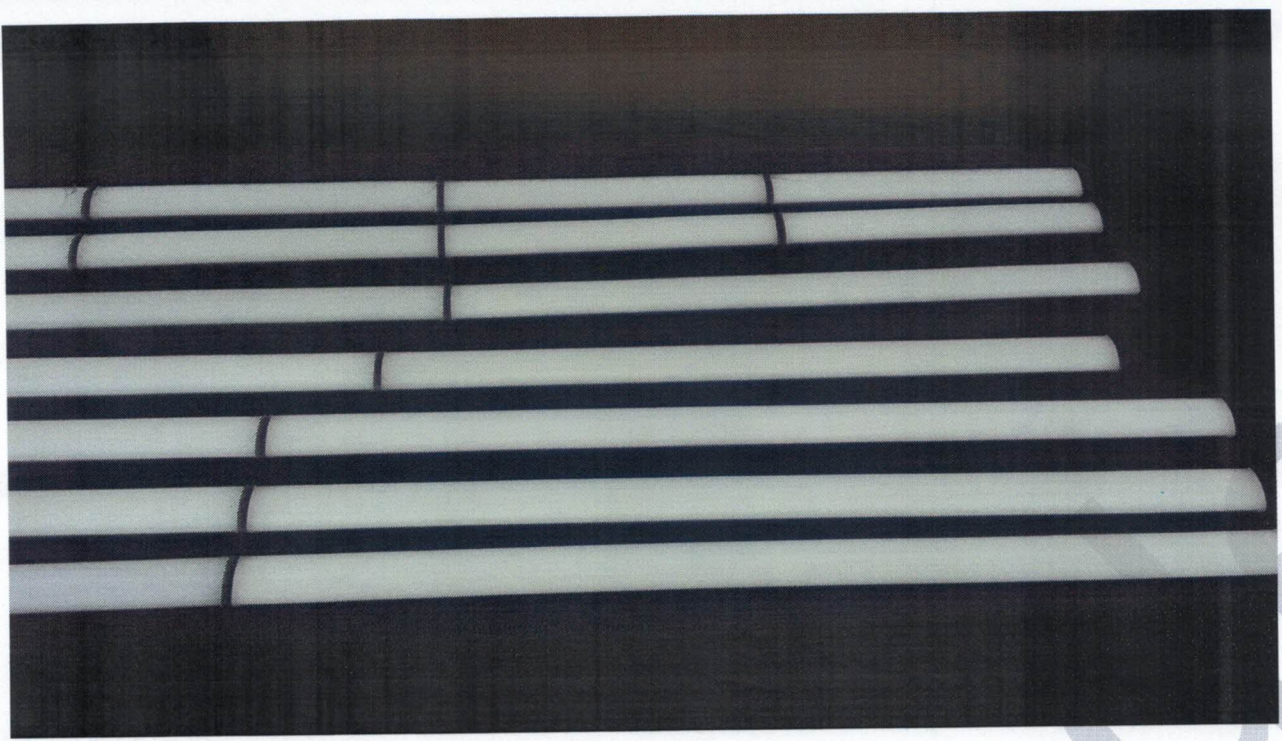


1, Specifications:

Led pendant line light			
Watt	20w	40w	60w
Size	600*73*55mm	1200*73*55mm	1500*73*55mm
Lumin	2600lm	5200lm	7800lm
Max linkable	90pcs	45pcs	30pcs
Max Length	54m	54m	45m
Light efficiency	130lm/w		
CCT	6000K/4000K/3000K		
CRI	>80		
SDCM	<6		
Bean angle	120		
Lifetime	50000 hours		
Warranty	3 years		
Led driver	Made in China		
Power factor	>0.93		
Pre-loaded cable	Single-phase 3wires, rated current 8A		
Materials	Aluminum 6063-T5, PC lampshade, PC lens		
IP rating	IP44		
Work temperature	20℃~+45℃		
Product level	A		
Input voltage	100-265VAC/200-240VAC 50/60Hz		
Installation	hanged by steel strings; For single use or conneted into line		

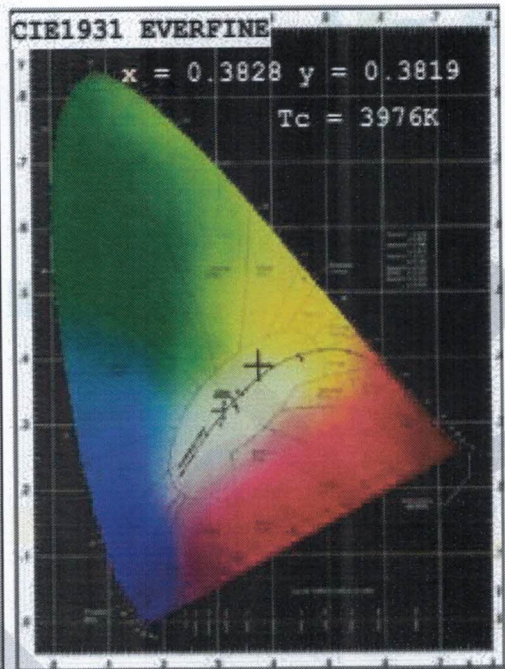
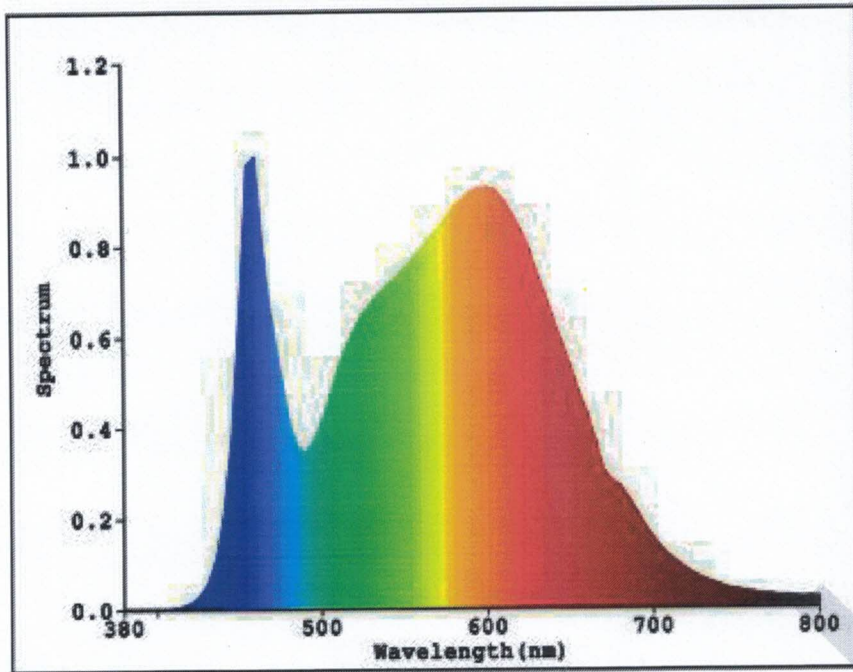
2, Pictures





3,Testing report

Light Source Test Report



Color Parameters:

Chromaticity Coordinate: $x=0.3828$ $y=0.3819$

Chromaticity Coordinate: $u'=0.2246$ $v'=0.5042$ ($duv=1.74e-03$)

Tc=3976K Dominant WL:Ld=578.3nm Purity=29.5% Centroid WL:572.0nm

Ratio:R=20.3% G=75.9% B=3.8% Peak WL:Lp=460.0nm HWL:28.6nm

Render Index:Ra=85.5

R1 =85	R2 =94	R3 =96	R4 =81	R5 =84	R6 =90	R7 =86	
R8 =68	R9 =23	R10=83	R11=80	R12=61	R13=88	R14=99	R15=79

Photo Parameters:

Flux: 5334.9 lm Fe: 16.610 W Efficacy:132.5 lm/W

Electrical Parameters:

Luminaire: U=219.9V I=0.1944A P=40.28W PF=0.9422

4, Disadvantages

- Brightness:

- High brightness:
Max to 54m by 90pcs, no darkness;
- Professional design, flexible application:
3pcs 18AWG cable, with the max current 8A
Modular design with inner driver easy&convenient
installation (driver can be altered easily)
- High quality&Gorgeous design:
6063 Aluminum
- PMMA:
Good PC cover to make sure the light distribution
balanced, PMMA control the light more accurately.

4, Applications:



duolec